

Daily Plan ~ Day 4

Tuesday, June 17, 2025



Day Coordinators:

Jess Yoder: Pike County Conservation District – DAILY

POINT OF CONTACT

Karen Tiesling and Mathilda Sheptak: Friends of the Delaware Water Gap National Recreation Area

Sherry Acevedo: Northampton County Parks

Alison Sommers-Sayre: Delaware River Greenway Partnership

Art Charlton, Explore Warren Tourism, Warren County

Stretch to be Paddled:

Milford Beach Boat Launch (RM246.5) to Dingmans Boat Launch / Access (RM 238.5) in Delaware Water Gap National Recreation Area

8 miles with Class I rapids, Paddle within the Delaware Water Gap National Recreation Area

Evening Camping: Driftstone Campground, 2731 River Road, Mt. Bethel, PA 18343

Morning Registration Location: EVERYONE travels to Dingmans Access Public Boat Ramp on PA 739 just before Dingmans Bridge. See directions on pages 2 - 4.

7:00 a.m. Breakfast In-camp at NEWE for campers only (7 a.m. – 8 a.m.). BREAK CAMP

8:00 a.m. **Folks at NEWE Camp** should leave by 8 a.m. to drive to Dingmans Access Public Boat Ramp. See directions on page 2 and parking info on page 3.

Day Trippers and new registrants, please note: (1) breakfast will not be offered at Dingmans this morning. (2) If you are bringing your own boat, please arrive ~9:15 a.m. to drop off your boat to our livery by 9:30 a.m.

9:30 a.m. Registration ~ for EVERYONE ~ at Dingmans Boat Launch. All cars will be left here for the day. See directions and parking instructions on pages 3-4.

9:30 a.m. All personal kayaks and canoes for new registrants loaded on the transport vans. Livery will leave ~9:30 a.m. to take boats to Dingmans.

10:30 a.m. Buses leave Dingmans with all paddlers aboard to travel to Milford Beach Boat Launch

11:00 a.m. Safety Briefing and brief Welcome from the Pike County Conservation District followed by put-in

1:30 p.m. Lunch at Namanock Recreation Site. Presentation of Park and Rec plan by Jessica Yoder

2:30 p.m. Resume paddling

5:00 p.m. Approx. Take-out at Dingmans Access Public Boat Ramp. **Campers** drive to Driftstone Campground, see directions on pages 4. Dinner on your own. Please arrive by 8 p.m. for check-in. Set up camp.

7:00 p.m. Evening program – TBD

10:00 p.m. Quiet Hours in camp

Please Note: [Driftstone Campground](#) features full bathroom and shower facilities and a pool. Please follow all camp rules while on-site. **Check-in by 8 p.m. Gates close at 9 p.m.**

Emergency Contact:
911

Many Thanks to Today's Sojourn Partners:

Delaware River Sojourn Steering Committee, Upper Delaware Preservation Coalition, Northeast Wilderness Experience, Driftstone Campground, National Canoe Safety Patrol, Pike County Planning, Pike County Conservation District, Friends of the Delaware Water Gap National Recreation Area, NPS Delaware Water Gap National Recreation Area, Delaware River Greenway Partnership, Northampton County Parks and Recreation, Warren County, New Jersey, Explore Warren Tourism, Warren County, We Transport, Konrad's Kitchen

Special Thanks to Sojourn Donors and Grantors:

Pennsylvania Organization of Watersheds and Rivers (POWR), Pennsylvania Department of Conservation and Natural Resources (DCNR), ShopRite, NPS Lower Delaware Wild and Scenic River and PPL.

Special Thanks to Dejay Branch, 30th Sojourn logo design artist

Driving Directions from NEWE Camp to Dingmans Boat Launch

4154 River Rd., Equinunk, PA 18417 to Dingmans Access Public Boat Ramp, Dingmans Ferry, PA 18328
Drive 55.7 miles, 1 hr 16 min

Click to make your own directions: <https://maps.app.goo.gl/KSA9KVqJJvpbk2BTA>

NEWE (Northeast Wilderness Experience) Campground
4154 River Rd, Equinunk, PA 18417

Take Kellam Bridge Rd to NY-97 S in Fremont

- ↑ 1. Head south on River Rd toward Braman Rd
3 min (1.1 mi)
- ↶ 2. Turn left onto Cooley Creek Rd
0.2 mi
- ↷ 3. Slight left onto Kellam Bridge Rd
0.3 mi
Entering New York
- 0.6 mi

Continue on NY-97 S to Highland

- ↷ 4. Turn right onto NY-97 S
35 min (28.4 mi)
- ↶ 5. Turn left onto Gables Rd
16.4 mi
- ↷ 6. Turn right onto NY-52 W
1.7 mi
- ↶ 7. Turn left onto Eckes Rd
0.2 mi
- ↶ 8. Turn left onto NY-97 S
1.4 mi
- 8.7 mi

Follow PA-590 E to PA-434 S in Greeley

- ↷ 9. Turn right onto Delaware Dr/Roebling Bridge
8 min (5.0 mi)
Entering Pennsylvania
- ↶ 10. Turn left onto Scenic Dr
0.2 mi
- ↷ 11. Scenic Dr turns slightly left and becomes PA-590 E
0.2 mi
- 4.6 mi

Drive from Dingmans Turnpike to Dingmans Ferry

- ↑ 12. Continue onto PA-434 S
31 min (21.0 mi)
- ↶ 13. Turn left onto PA-739 S/Dingmans Turnpike
5.5 mi
Continue to follow Dingmans Turnpike
- 15.4 mi

Drive to your destination

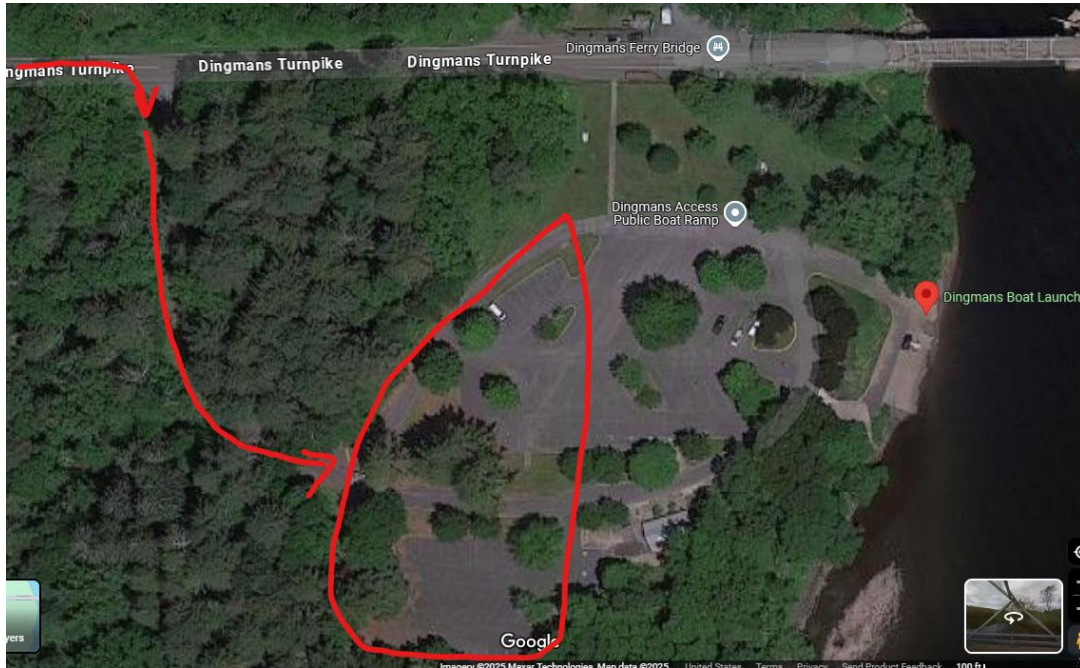
- ↷ 14. Turn right
47 sec (0.2 mi)
- ↶ 15. Turn left
456 ft
- 443 ft

Dingmans Access Public Boat Ramp
Dingmans Ferry, PA 18328

Emergency Contact:
911

Parking & Registration at Dingmans Access Public Boat Ramp

Parking is to the right or left as you pull past the entrance booth. Please stay at the back of the parking area to allow for other visitors. **Registration** will be near to the actual boat launch by the river.



General Driving Directions to Dingmans Access Public Boat Ramp

Click for your own directions to Dingmans Access: <https://maps.app.goo.gl/rY4Nhp6zWxR6pZKw5>

Directions to Dingmans Access Public Boat Ramp

From New Jersey & New York via Interstate 80 West:

- Take Route 80 west to the second exit in PA, exit 309.
- The ramp puts you directly onto US 209 north.
- Go straight on US 209 north to PA 739 and turn right.
- Dingmans Access is on the right before the bridge, there are brown NPS signs before and at the turn in.
- See notes and photo above for parking.

From points west in PA via Interstate 80 East:

- Take Route 80 east to exit in PA, exit 309.
- The ramp puts you directly onto US 209 north.
- Go straight on US 209 north to PA 739 and turn right.
- Dingmans Access is on the right before the bridge, there are brown NPS signs before and at the turn in.
- See notes and photo above for parking.

Emergency Contact:
911

2025 Delaware River Sojourn: 30 Years on Sojourn Time
Celebrating the 2025 Pennsylvania River of the Year

From points north on US 209:

- Make your way to Milford PA, and proceed south on US 209.
- Follow the signs through Milford to stay on US 209.
- Go straight on US 209 south to PA 739 and turn right.
- Dingmans Access is on the right before the bridge, there are brown NPS signs before and at the turn in.
- See notes and photo above for parking

From Easton, PA:

- Find your way to take PA 33 north.
- US 209 will join PA 33 near Sciota PA, once on US 209, stay on US 209 north.
- PA 33 will exit to the left near Syndersville, continue north on US 209 as it joins I-80 in Stroudsburg.
- Once on I-80 east, take exit 309 to stay on US 209 north
- Follow the directions for “from points west in PA via Interstate 80 East”.

Driving Directions from Dingmans Access Public Boat Ramp to Driftstone Campground

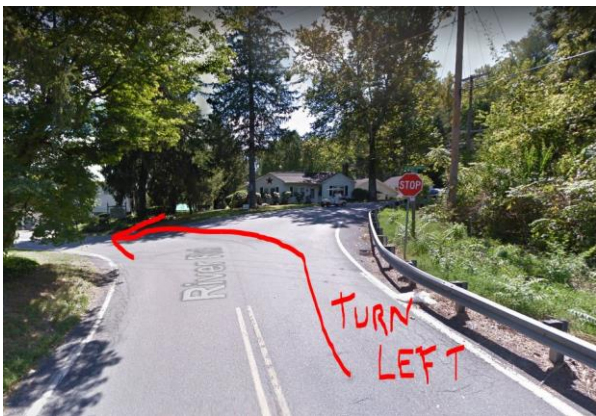
Dingmans Access Public Boat Ramp, Dingmans Ferry, PA 18328 to

Driftstone Campground, 2755 River Road, Mt. Bethel, PA 18343

Drive 50 minutes, ~35 miles

Click for directions: <https://maps.app.goo.gl/Vo74Wxpx8d9UxXeHA>

- Turn left out of Dingmans Access to the light at US 209.
- Turn left and continue south on US 209 to the on-ramp for I-80 East (Delaware Water Gap / New Jersey / New York). Cross the Delaware River into New Jersey on I-80.
- Take Columbia Exit #4B in New Jersey and follow signs to Portland, PA.
- Cross Portland/Columbia toll bridge to toll booth.
- Turn right immediately after going through toll booth.
- Go to stop sign at bottom of ramp and turn right onto River Road.
- Go under bridge and continue on River Road for 3 miles to stop sign.
- Turn left and continue on River Road for 1 mile.
- Driftstone's entrance is on the left next to the large red barn.



Picture on the left is where you turn to stay on River Rd. Picture on the right is Driftstone's red barn, turn left to enter.

Emergency Contact:

911