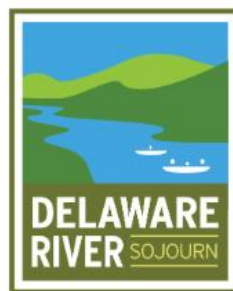


# Daily Plan ~ Day 6

## Thursday, June 25, 2026



### **Day Coordinators:**

Alison Sommers-Sayre, Delaware River Greenway Partnership – DAILY POINT OF CONTACT  
Cindy Kunas, Delaware River Greenway Partnership  
Andy Desko, PA Fish and Boat Commission  
Annette Earling, Washington Crossing Park Association  
Joe Moore, Washington Crossing State Park  
Ross Heutmaker, Friends of Washington Crossing Historic Park

### **Stretch to be Paddled:**

Fireman's Eddy Boat Launch, N.J. (RM 147) to Yardley Boat Launch, Pa. (RM 138.5)  
8.5 miles with Class I/I+ rapids, Paddle through Scudders Falls

**Evening Camping:** Washington Crossing State Park, Phillips Farm Area off of Bear Tavern Rd.

---

### **Morning Meeting Location for Everyone:**

**Washington Crossing State Park, Sojourn Camping Area at Phillips Farm  
off of Bear Tavern Road  
See directions on pages 2-3**

- 7:00 a.m. Breakfast and registration **for all Sojourners in camp at Washington Crossing State Park.**  
**Note: Everyone must register each morning.**
- 7:15 a.m. **Arriving today with a boat?** Drop off with NEWE livery by this time.
- 8 a.m. Livery with boats and NCSP safeties depart for launch location
- 8:45 a.m. **Buses leave** camp for Fireman's Eddy Launch
- 9 a.m. Welcome & Safety Talk at Fireman's Eddy
- 9:45 a.m. Optional paddling instruction for new paddlers with National Canoe Safety Patrol.
- 10:00 a.m. Begin launch from Fireman's Eddy and paddle to Washington Crossing Historic Park
- 12 p.m. Lunch and Programming at Washington Crossing Historic Park. Program to include film showing, tour of buildings, blacksmithing demo – by Friends of Washington Crossing Historic Park
- ~2:00 p.m. Resume paddling, paddle through Scudders Falls
- 3:30 p.m. Approx. Take-out at Yardley, Pa. Boat Ramp
- 4:00 p.m. Shuttle back to Washington Crossing State Park camp
- 4:30-6 p.m. Planned showers offsite – tbd

Emergency Contact:

911

After Hrs – Trenton Dispatch 1-877-927-6337

- 6:30 p.m. Dinner  
7:00 p.m. Evening program – learn about the new Visitors' Center, Observatory and/or Night Hike  
10:30 p.m. Quiet Hours in camp
- 

**Note:** If bringing your own boat, please make sure it has up-to-date registration and/or current launch permits.

**Evening Camping Info: This is a primitive campsite**

- Sojourn will be camping in Washington Crossing State Park off of Bear Tavern Road in the Phillips Farm Area
  - Campground offers portable toilets and hand-washing stations; planned showers offsite
    - Sojourn CANNOT drive into the camping area; park in the parking lot & carry in
  - Sojourn participants can camp in cars, but CANNOT set-up tents near cars in the adjacent field
    - No dumping from trailers
    - No electric or water hook up
      - Carry in, carry out
  - Fire rings – each group campsite has one fire ring (4 total); neighbors adjacent to the park sell firewood
    - No alcohol permitted
    - Quiet hours after 10:00 p.m.
- 

**Many Thanks to Today's Sojourn Partners:**

Delaware River Sojourn Steering Committee, Upper Delaware Preservation Coalition, Northeast Wilderness Experience, State of New Jersey, Dept. of Environmental Protection, Division of Parks and Forestry, Washington Crossing State Park, Delaware & Raritan Canal State Park, National Canoe Safety Patrol, Delaware River Greenway Partnership, Washington Crossing Park Association, Pennsylvania Fish and Boat Commission, Friends of Washington Crossing Historic Park, PA DCNR Washington Crossing Historic Park, We Transport

**Special Thanks to Sojourn Donors and Grantors:**

Pennsylvania Organization of Watersheds and Rivers (POWR), ShopRite, NPS Lower Delaware Wild and Scenic River and PPL

---

**Joining Today? Morning Driving Directions to Washington Crossing State Park:  
Phillips Farm Camping Area off of Bear Tavern Rd.**

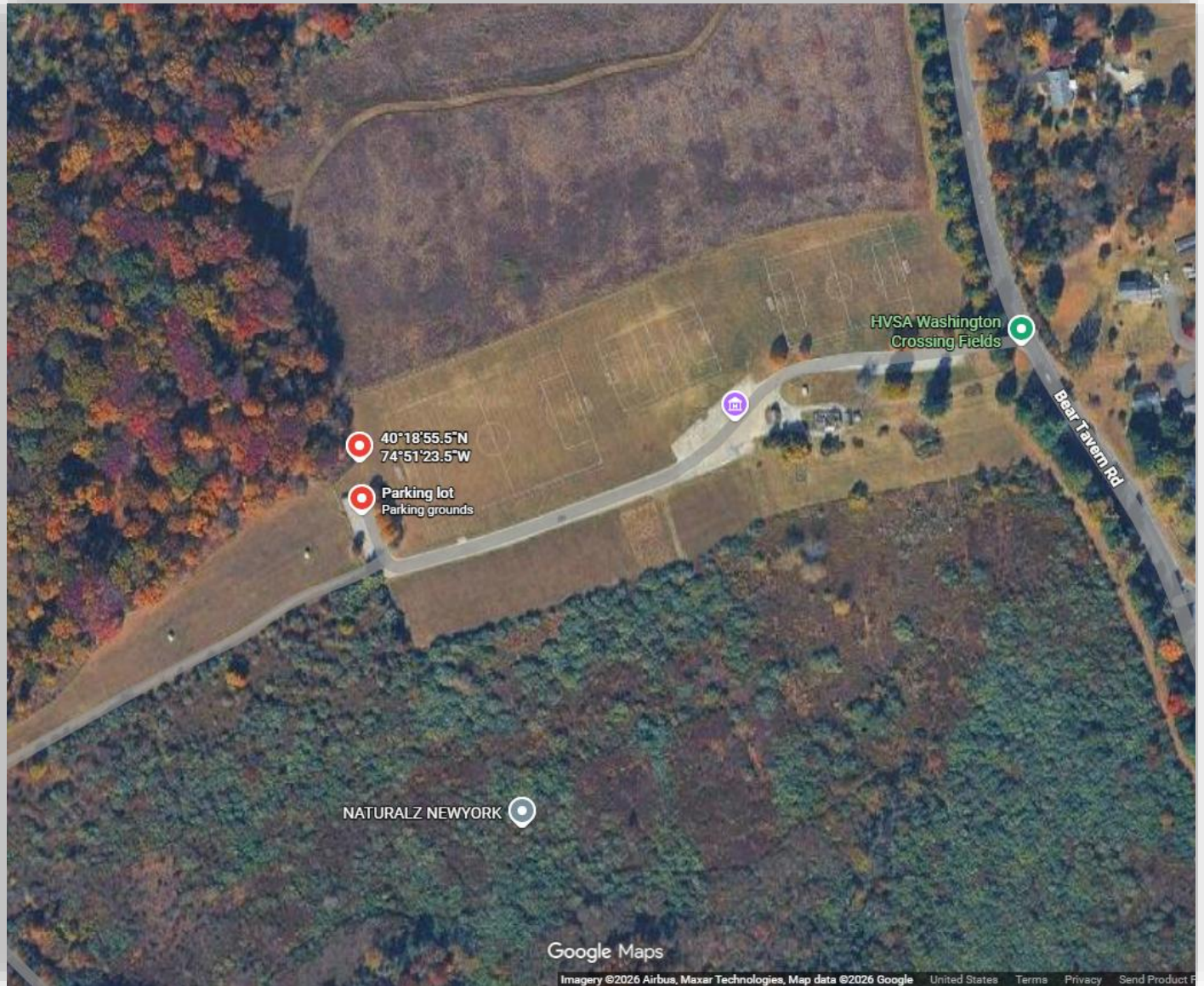
- Click to make your own directions: <https://maps.app.goo.gl/R6ti1ZeNewHogndN8>
- Camping Parking lot GPS: 40.31541, -74.85652

Emergency Contact:

911

After Hrs – Trenton Dispatch 1-877-927-6337

**Washington Crossing State Park, NJ – CAMPSITE & REGISTRATION AREA**  
Phillips Farm Parking Lot off of Bear Tavern Rd. - 40°18'55.5"N 74°51'23.5"W  
Look for Sojourn signs



Emergency Contact:

911

After Hrs – Trenton Dispatch 1-877-927-6337